



Steel Rail Boards

Fully welded steel rail boards provide a safe ramp for powered vehicle application.

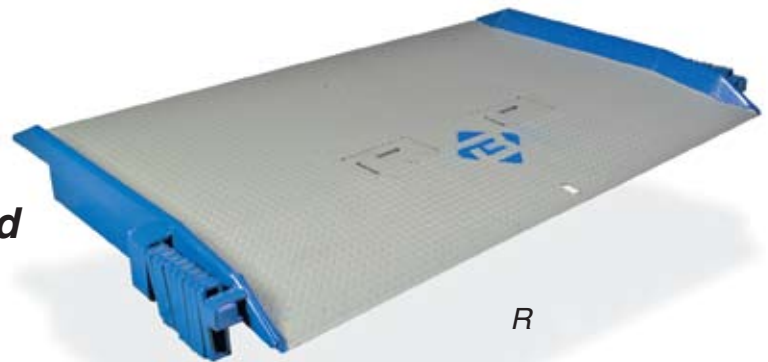
RAIL BOARD (R)

- All-welded steel construction
- Capacities from 15,000 to 90,000 pounds
- Rectangular or flared design
- Box understructure for strength and safety
- Heavy-duty locking rings for safe, secure positioning
- Lifting loops drop into recessed pockets
- Lifting chains available

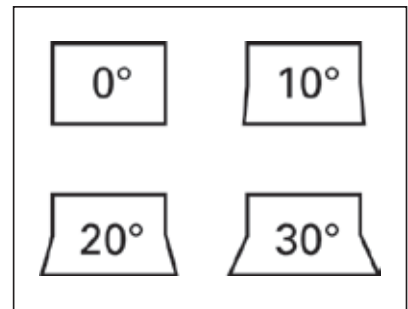
Rail boards are designed for use on all types of railway boxcars, including refrigerated and special cars for the lumber and the paper industries. First position the rail board next to the railcar. The locking ring will automatically secure the rail board against the dock. Box understructure bumpers fit around the car latches to protect door latch.

All rail boards are designed and built to match the specific dock conditions. The Bluff design is finalized by using information provided on a Bluff rail board worksheet. This information allows the manufacture of a rail board that has the proper width, length, bends, capacity, and understructure.

Manufactured and tested in compliance with ANSI Standard MH30.2



LOCKING RING DESIGN



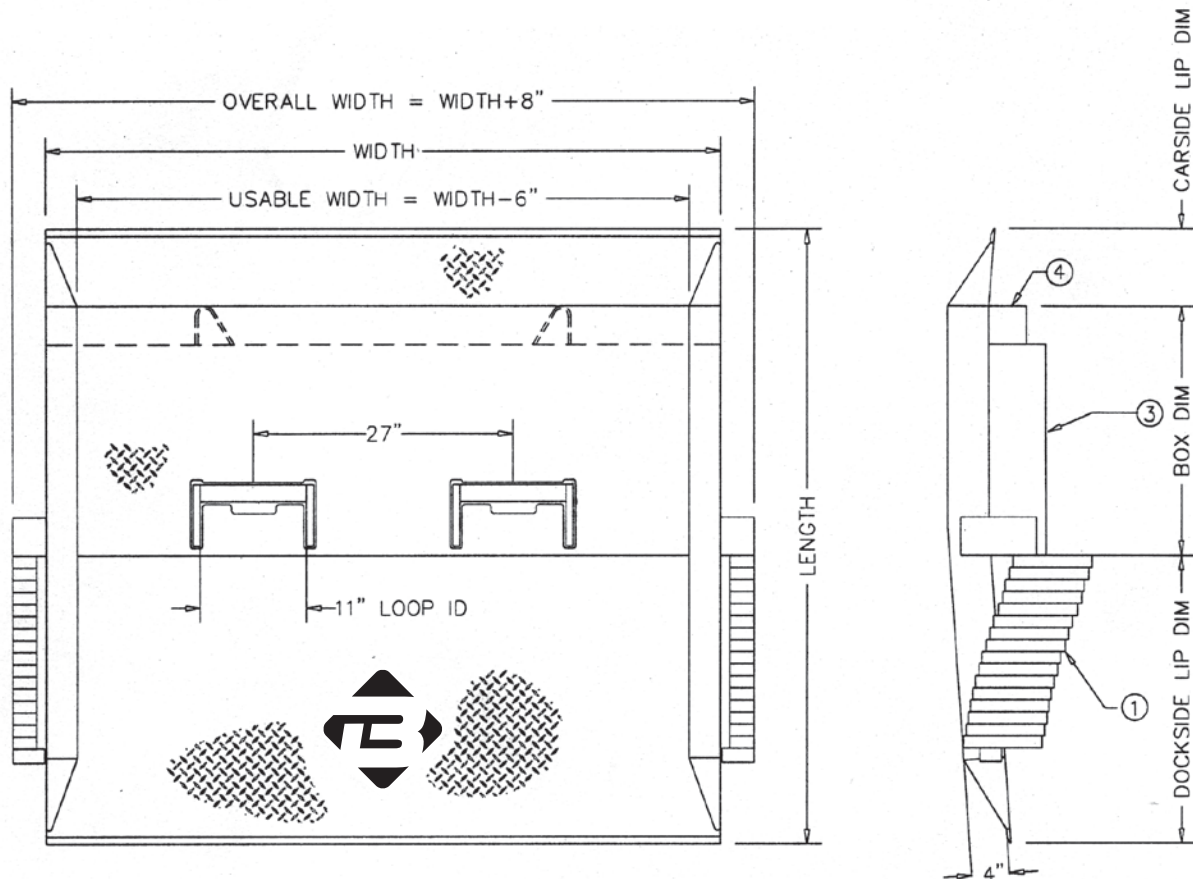
FLARE OPTIONS

Selecting the proper Bluff product for your application will improve product life, safety, and loading efficiency.

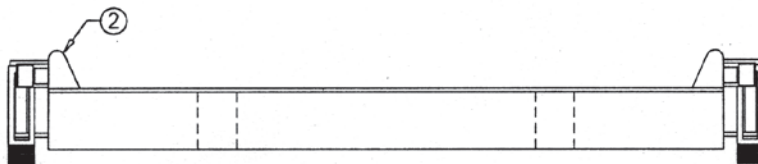
SERVICE YOU CAN STAND ON

619-255-1428 • www.cssyes.com • Fax 619-255-2076
4428 Glacier Avenue San Diego, CA 92120

STEEL RAIL BOARDS MODEL R



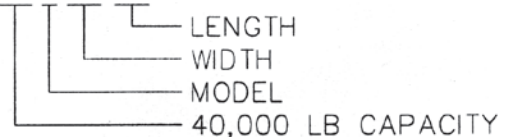
NOTE:
BOX DIMENSIONS, BENDS AND, LIP DIMENSIONS VARY
WITH EACH APPLICATION. MEASUREMENTS TAKEN ON-SITE ARE CRUCIAL
FOR PROPER APPLICATION.



DESCRIPTION:

- ① RAILBOARD LOCKING RINGS
- ② STRUCTURAL SAFETY CURBS (1/4" STEEL)
- ③ BOX UNDERSTRUCTURE (1/4" STEEL)
- ④ 4" X 4" BUMPER

40R8472



**CONTACT BLUFF CUSTOMER SERVICE FOR ALL RAIL BOARD PRICING
RAIL BOARDS CAN BE FLARED 10, 20 OR 30 DEGREES ON THE
DOCKSIDE FOR MORE EFFICIENT LOADING AND UNLOADING.**